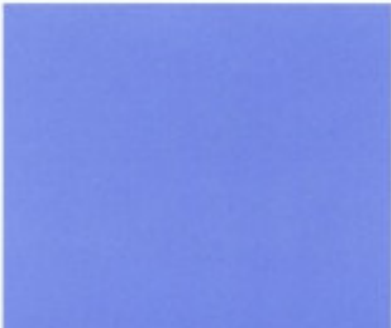




HAMMAR



WE PRODUCE TWO MODELS OF HAMMAR 150

1974 THE FIRST HAMMAR rolled out of our workshop. With high quality and top service provided from the very start, we have become the world leaders of self loading container vehicles.

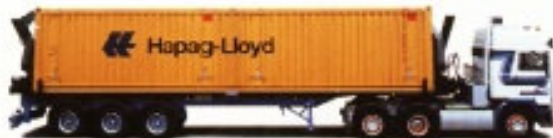
Hammar's 150 series is the result of an extensive development effort combining the latest technology with long experience. The 150 series can be delivered as two different models, 151 and 152, which can both be mounted on different types of semi-trailers. Below we give you a view of the possibilities.



Hammar 151 HT. The length of the trailer frame can be adjusted between 20' and 40'. (T stands for Trombone).



Hammar 151 HT. Here contracted to 20'. Suitable for transportation in confined areas with little space.



Hammar 151 HS. The cranes slide on a fixed semi-trailer frame. This type is better suited to road and vehicle regulations in certain countries and allows for a higher payload. (S stands for sliding).



Hammar 151 HS with a 20' container. Adjusting the cranes between 20' and 40' takes only twenty seconds. All models are provided with remote controlled hydraulically adjustable cranes. As an option we can supply 10' - 48' capacity.

The Hammar 151 HS is our standard model.



The Hammar 152 HS is more advanced with its unique foldable stabilizer. It can be equipped with an automatic top spreader as on the unit shown here.

TOTAL FLEXIBILITY



With a Hammar, you are flexible and independent from other lifting equipment and you avoid waiting time. You unload a fully loaded container in four minutes and can then continue with other transport jobs.



You can load and unload from trailer to trailer. When hauling long distance, you can convoy together with several conventional semi-trailers, using the Hammar for loading and unloading.



With a Hammar 151 and 152 you can stack two fully loaded 45' high cube (9'6") containers on top of each other. With its four stabilizers, the Hammar stands steadily on the ground.



You can load and unload containers on railway cars. Even if using extremely low built wagons.



The design of the cranes allows for separate handling of two 20' containers on a 40' chassis. The standard 3" distance between the containers is enough for the Hammar hooks and chains.



With our Hammar twin-lock system, you can lift two 20' containers simultaneously.

CHARACTERISTICS



We offer the highest payload in the industry because of low unladen vehicle weight. A two axle Hammar 151 HS for 20'-40' containers weighs only 9.6 tons.



The 150 series' total length is well under 13.6 metres. This length is accepted by all EEC countries and most other countries as well.



The cranes have a long outreach. The distance between container and semi-trailer, can on standard models be as much as up to 1100 millimetres.



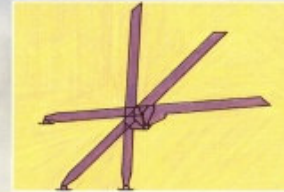
The stabilizers reach far out. This is crucial for safe lifting operations. Hammar is the market leader with 1850 mm outreach.



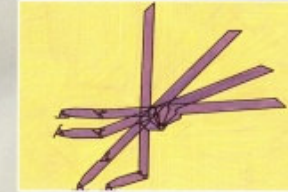
Stability when stacking is of utmost importance. The Hammar 151 and 152 have extra stabilizers on the opposite side as standard. This ensures safe stacking operations.



The cylinders are identical in many places, such as the leg and crane arm cylinders of our 152 HS. Six similar cylinders allow for simple and cheap maintenance.



The cranes for the 151 and 152 are identical. However, the stabilizers are different. The Hammar 151 has stabilizers which can be moved in two directions.



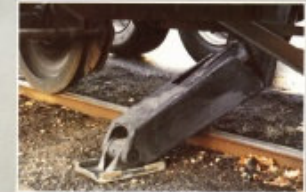
The Hammar 152 has an extra folding leg cylinder, giving further opportunities for proper support.



The Hammar 152 allows the operator to rest the stabilizers on both the frame members of a railway car.



Hammar container handling equipment is operated in more than forty countries worldwide. We are flexible and we adjust our products to the buyer's needs and to each country's road and vehicle legislation. Above you can see a Hammar 151 HS built for right hand side lifting.



The patented folding stabilizer of a Hammar 152 increases the flexibility. It allows for extra possibilities for support under low built railway cars and prime movers.



DETAILS



The Hammar 151 and 152 are powered by a double flow piston pump mounted directly on the gear box of the prime mover together with a PTO.



As an alternative we offer a diesel engine power pack for independent hydraulic power. With the power pack on the semi-trailer, you are free to choose any prime mover.



The cranes are jointed by heavy duty slide bearings with hardened axles polished to exact dimensions.



The hydraulic cylinders together form the heart of the crane. They are of our own construction and of the highest possible quality. The lifting cylinders are generously dimensioned – 200 mm diameter.



All hydraulic cylinders are connected with special hinged bearings which protect against potentially damaging lateral movement. They give a perfectly straight load and long lifetime.



All functions are manoeuvred from a portable remote control box. It has a 6 metre long cable and is standard on both models. As an option we can supply cordless radio control or manual levers.



As an alternative to manual twist locks you have an option to order automatic container locks. They will save you a lot of time during every loading and unloading operation.



As an option you can also choose an extra container beam for 2x20' containers. By using our ingenious Hammer twin-lock system, two 20' containers can be lifted simultaneously.



The hoses move inside a protective casing which can easily be opened when replacing a hose. This makes your maintenance easier.



An automatic top spreader substitutes hooks and chains. When lifting and stacking many containers, the top spreader is an advantage. It is hydraulically adjusted and is operated from the remote control box. Delivered as an option.



The new safety hook which we developed ourselves, will not fall out of the corner boxes or catch in the trailer frame by mistake. It is light and easy to handle. It weighs only 1.9 kg and is tested and approved for a container load of up to 47 metric tonnes.



Hammar offers you the option of different combinations of axles and suspensions to suit your every need. Above is pictured a triple bogie with two force steered axles.



**WE DON'T FOLLOW DEVELOPMENT.
WE LEAD IT.**



HAMMAR

Hammar Maskin AB

SE-517 95 Olsfors, Sweden

Phone: +46 33 29 00 00, Fax: +46 33 29 00 01

E-mail: hammar@hammarmaskin.se